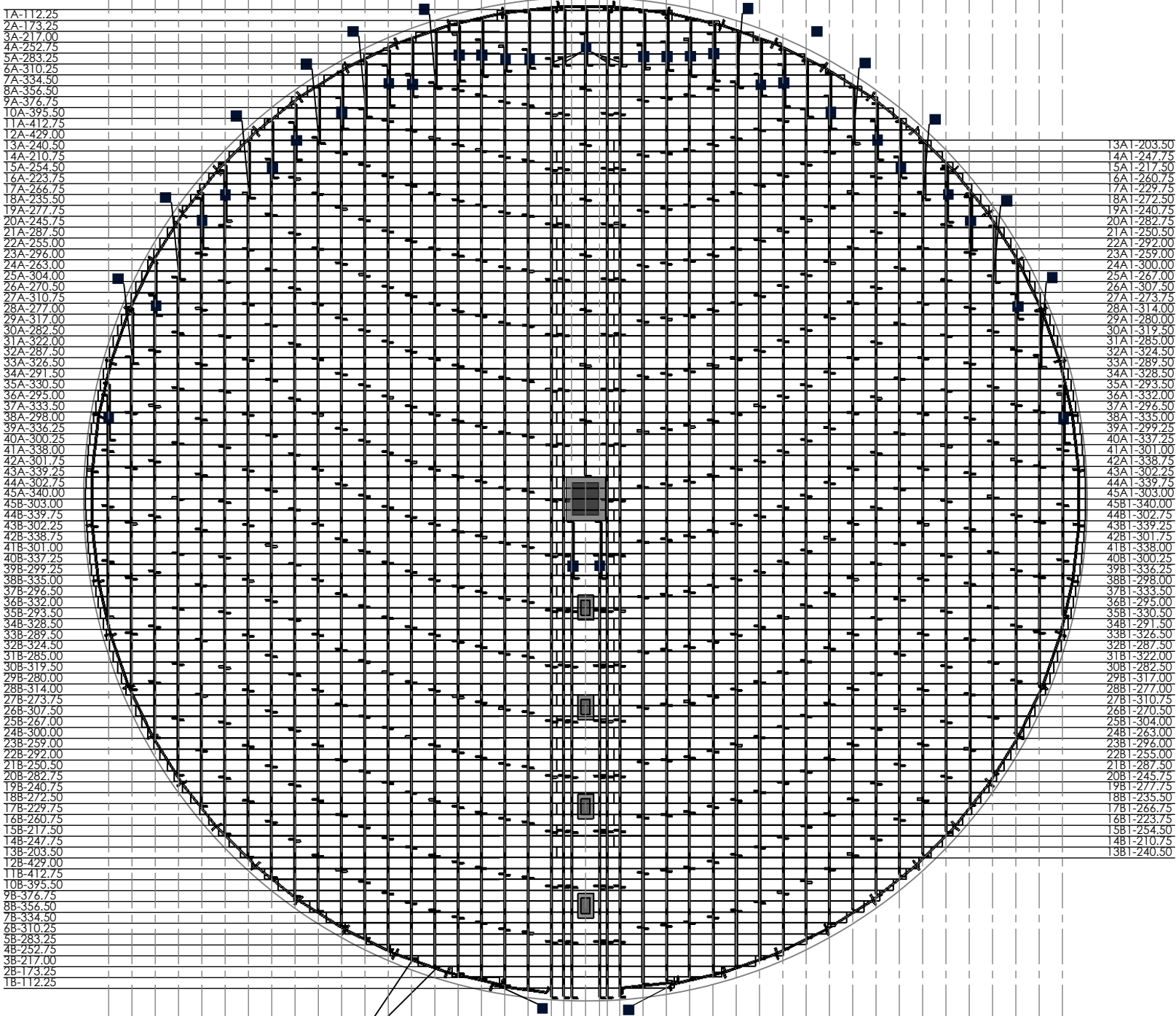
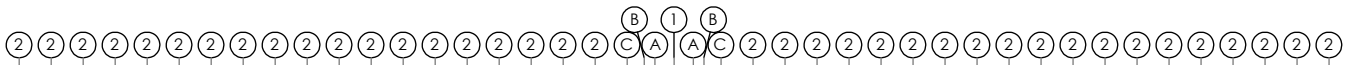


5415 FLOOR ILLUSTRATION (55' EAVE HEIGHT)



■ CLIPS PLACED AT EVERY INTERSECTION FROM ROW TO SUPPORT CIRCUMFERENCE

WARNING: DO NOT EXCEED 6" OF BOARD OVER HANG FROM SUPPORT

| ITEM | DESCRIPTION |
|------|---|
| 1 | CENTER CHALKLINE |
| 2 | NORMAL CHALKLINE SPACING 15" |
| A | SPECIAL CHALKLINE SPACING (9" FROM CENTER) |
| B | SPECIAL CHALKLINE SPACING (14" FROM CENTER) |
| C | SPECIAL CHALKLINE SPACING (22" FROM CENTER) |
| ■ | 2 CLIPS APPLIED AT THE TOP AND BOTTOM OF EVERY SUPPORT INTERSECTION |

| ITEM | AMOUNT |
|---------------|--------|
| 42" SYNTIRO'S | 692 |
| CLIPS | 265 |

| UNITS | TOTALS |
|-----------|------------|
| LIN/FT | 3789.63' |
| FLASHING | 109 |
| OVR. WGHT | 11,791 LBS |