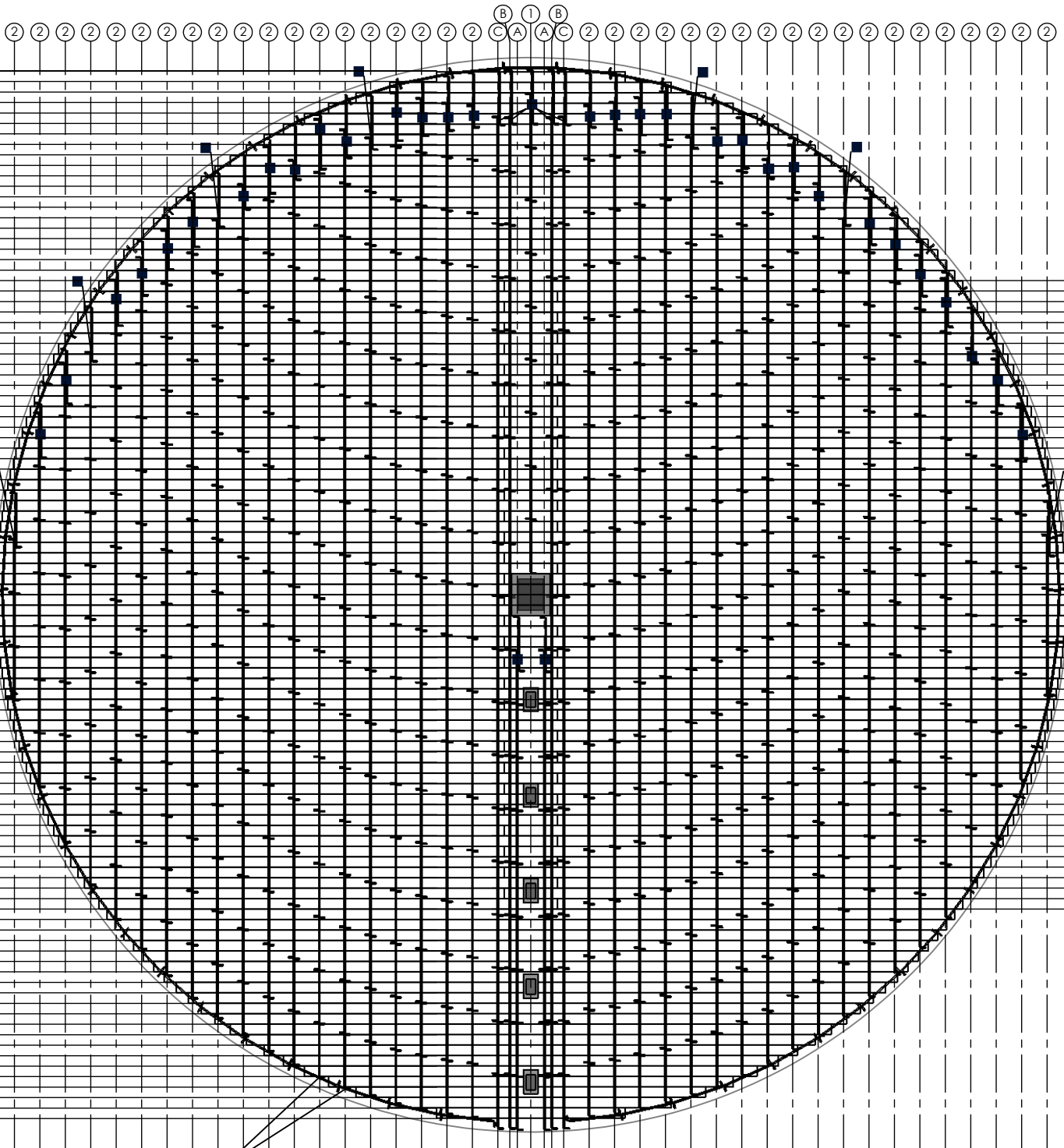


6010 FLOOR ILLUSTRATION (37' EAVE HEIGHT)



■ CLIPS PLACED AT EVERY INTERSECTION FROM ROW TO SUPPORT CIRCUMFERENCE

WARNING: DO NOT EXCEED 6" OF BOARD OVER HANG FROM SUPPORT

| ITEM | DESCRIPTION   |
|------|---|
| 1    | CENTER CHALKLINE  |
| 2    | NORMAL CHALKLINE SPACING 17"  |
| A    | SPECIAL CHALKLINE SPACING (9" FROM CENTER)                            |
| B    | SPECIAL CHALKLINE SPACING (14" FROM CENTER)                           |
| C    | SPECIAL CHALKLINE SPACING (22" FROM CENTER)                           |
| ■    | 2 CLIPS (APPLIED AT THE TOP AND BOTTOM OF EVERY SUPPORT INTERSECTION) |

| ITEM          | AMOUNT |
|---------------|--------|
| 42" SYNTIRO'S | 767    |
| CLIPS         | 260    |

| UNITS         | TOTALS     |
|---------------|------------|
| LIN/FT        | 4,690'     |
| FLASHING      | 121        |
| TRUSS SPLICES | 120        |
| OVR. WGHT     | 14,020 LBS |