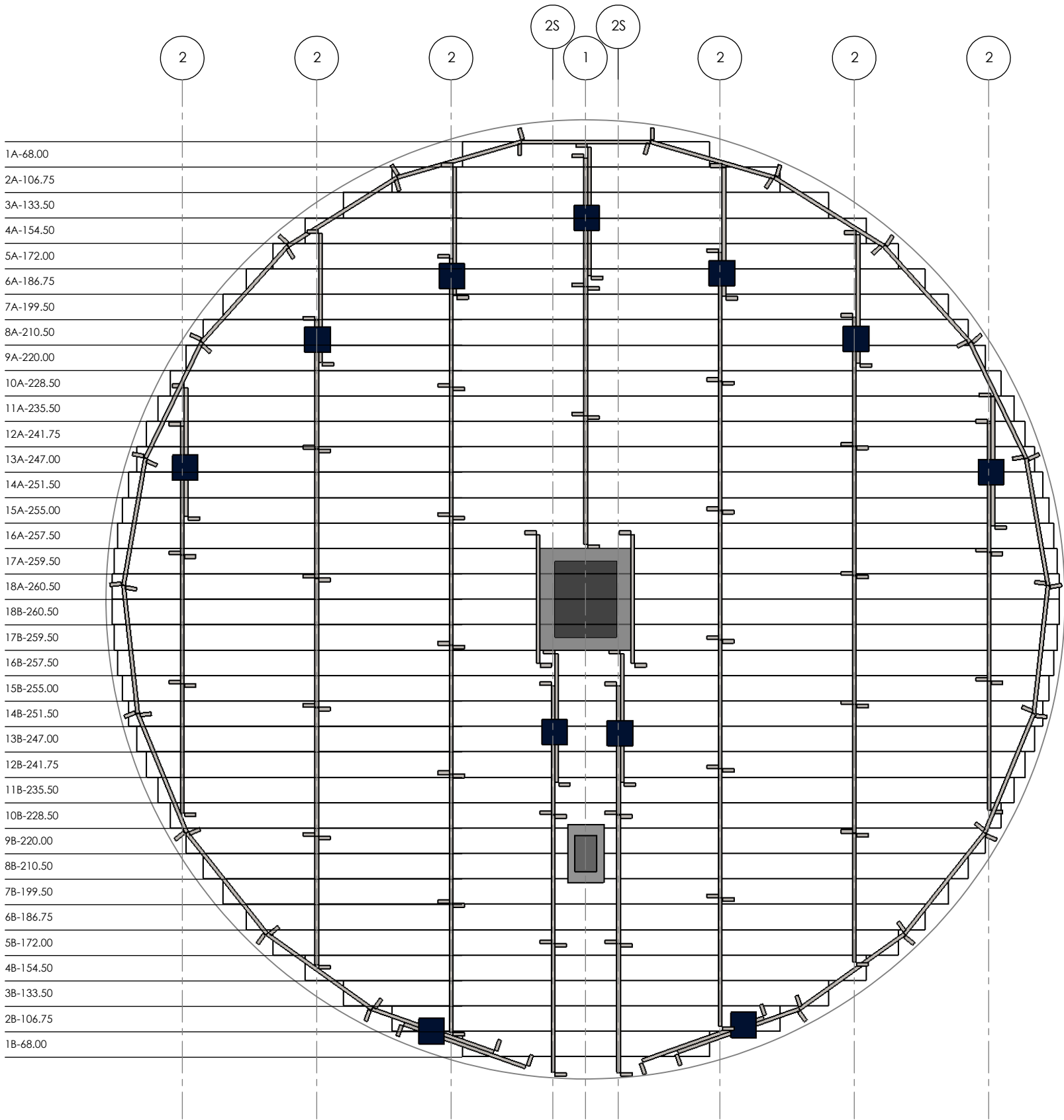


2205 FLOOR ILLUSTRATION (18' EAVE HEIGHT)



CLIPS PLACED AT EVERY INTERSECTION FROM ROW TO SUPPORT CIRCUMFERENCE
 WARNING: DO NOT EXCEED 6" OF BOARD OVER HANG FROM SUPPORT

| ITEM | DESCRIPTION |
|---|---|
| 1 | CENTER CHALKLINE |
| 2 | NORMAL CHALKLINE SPACING 37" |
| 2S | INNER ROW CHALKLINE SPACING 9" |
| | 2 CLIPS (APPLIED AT THE TOP AND BOTTOM OF EVERY SYNTIRO INTERSECTION) |

| ITEM | AMOUNT |
|---------------|--------|
| 42" SYNTIRO'S | 73 |
| CLIPS | 55 |

| UNITS | TOTALS |
|----------|------------|
| LIN/FT | 614.71' |
| WEIGHT | 952.80 LBS |
| FLASHING | 45 PCE |