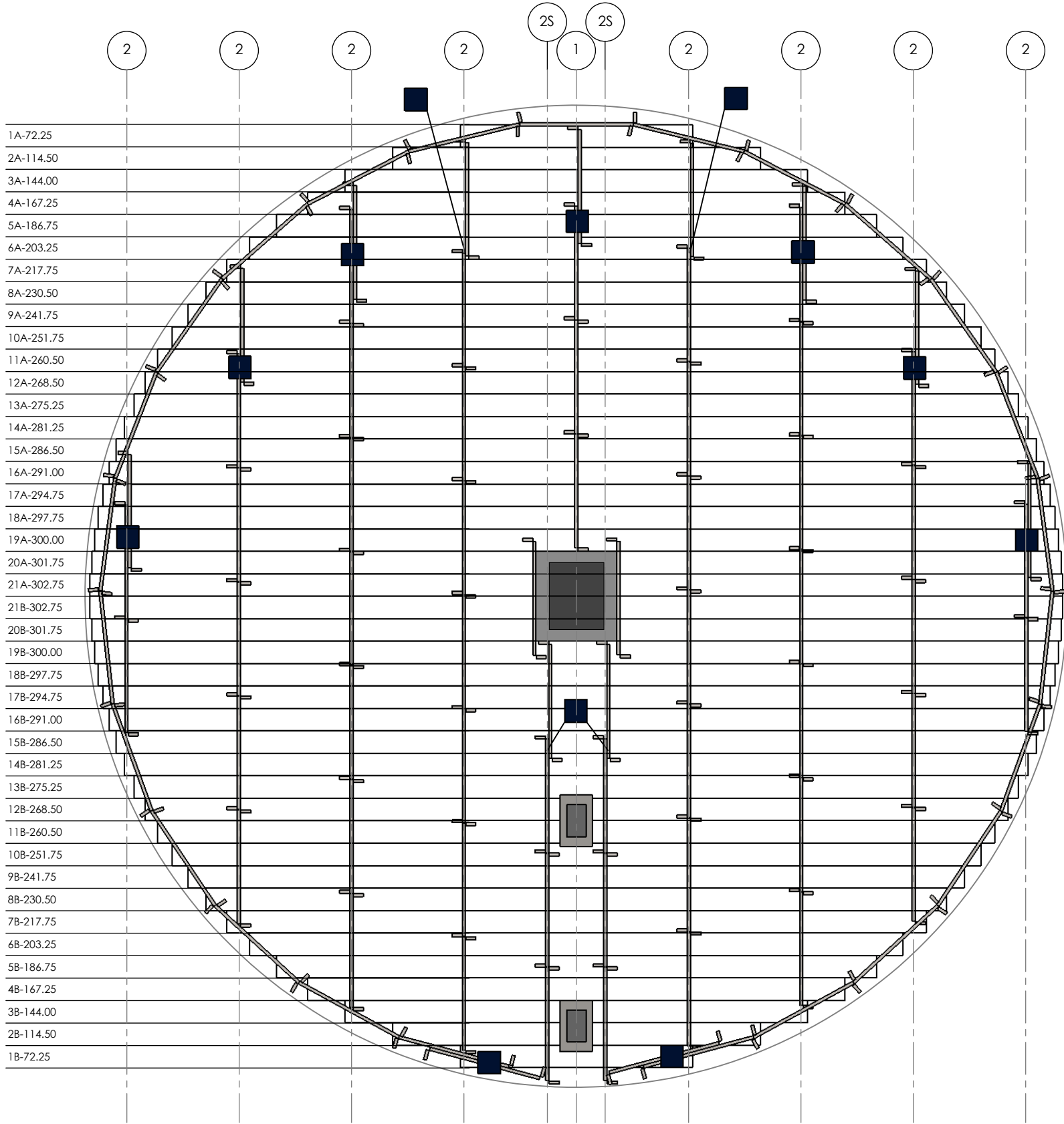


25.505 TWISTER FLOOR ILLUSTRATION (18' EAVE HEIGHT)



■ CLIPS PLACED AT EVERY INTERSECTION FROM ROW TO SUPPORT CIRCUMFERENCE

WARNING: DO NOT EXCEED 6" OF BOARD OVER HANG FROM SUPPORT

| ITEM | DESCRIPTION |
|------|---|
| 1 | CENTER CHALKLINE |
| 2 | NORMAL CHALKLINE SPACING 35" |
| 2S | INNER ROW CHALKLINE SPACING 9" |
| ■ | 2 CLIPS (APPLIED AT THE TOP AND BOTTOM OF EVERY SYNTIRO INTERSECTION) |

| ITEMS/UNITS | TOTALS | WGT./LBS |
|--------------|---------|----------|
| SYNTIRO'S | 93 | 742 |
| CLIPS | 70 | |
| FLOOR LIN/FT | 831.63' | 1,664 |
| FLASHING | 52 | 129 |
| OVERALL WGT. | | 2,535 |